

MDT Push Button Lite 55 Basic 1/2-fold

Version		
BE-TAL55B1.01	Push Button Lite 55 Basic	1-fold, White glossy finish
BE-TAL55B2.01	Push Button Lite 55 Basic	1-fold, White glossy finish

The MDT Push Button Lite 55 Basic releases KNX telegrams depending on the parameterization after pressing the buttons. The push buttons can be programmed for 1 or 2 button operation.

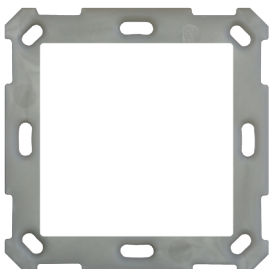
In addition to switching, dimming, blinds, scenes or sending values, a lot more functions are available. The Push Button Lite 55 Basic has 4 integrated logic blocks.

The Push Button Lite 55 Basic has an innovative group function with long/extra long button press. For example, with a long press of a button, a shutter can move normally UP and DOWN, while the extra long button press moves the entire blind group of the room.

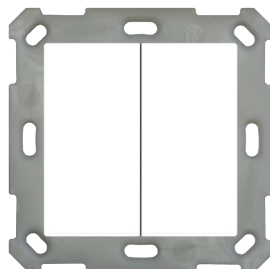
With the new multi touch function up to 4 values/datapoints can be send to one ore more objects. With a single button different light groups can be switched, e.g. 1 x tap is ceiling light, 2 x tap is wall light etc.

The Push Button Lite 55 Basic is a flush mounted device for fixed installations in dry rooms. For project design and commissioning of the MDT Push Button Lite 55 it is recommended to use the ETS. Please download the application software at www.mdt.de/downloads.html

BE-TAL55B1.01



BE-TAL55B2.01



- Production in Germany, certified according to ISO 9001
- Fits 55mm systems/ranges
- Push Buttons can be programmed for 1 or 2 button operation
- 1 and 2 button operation for switching, dimming, shutters, values
- Changing of values/scenes with up to 4 values
- Short/long button push and 2 objects
- **New multi touch function, sends up to 4 values/DPTs on the same or different objects**
- **Innovative group control with long/extra long button press**
- 4 logic blocks
- Integrated bus coupling unit
- 3 years warranty

Technical Data	BE-TAL55B1.01	BE-TAL55B2.01	
Number of push button pairs/ push buttons	1/2	2/4	
Specification KNX interface	TP-256	TP-256	
Available application software	ETS 4/5	ETS 4/5	
Permitted wire gauge			
KNX busconnection terminal	0,8mm Ø, solid core	0,8mm Ø, solid core	
Power supply	KNX Bus	KNX Bus	
Power consumption KNX bus typ.	< 0,5W	< 0,5W	
Operation temperature range	0 to + 45°C	0 to + 45°C	
Enclosure	IP 20	IP 20	
Dimensions (W x H x D)	55mm x 55mm x 25mm	55mm x 55mm x 25mm	

Exemplary circuit diagram BE-TAL55Bx.01

