



Flat Sensato v2

**KNX Humidity and Temperature sensor
for flush mounting**

ZSFSENV2

Application Program Version: [1.4]

User Manual Version: [1.4]_a

CONTENT

Content.....	2
1 Introduction	3
1.1 Flat Sensato v2.....	3
2 Configuration	4
2.1 General	4
2.2 Humidity	6
2.3 Internal Temperature Sensor	6
2.4 Notification LED	8
2.4.1 Configuration.....	8
2.5 Inputs.....	10
2.5.1 Binary Inputs.....	10
2.5.2 Temperature Probe	10
2.5.3 Motion Detector.....	11
2.6 Logic Functions	11
2.7 Thermostats.....	11
ANNEX I. Communication Objects.....	12

1 INTRODUCTION

1.1 FLAT SENSATO V2

Flat Sensato v2 is a sensor with a flat design to measure ambient temperature, relative humidity and to calculate dew point for the sending of humidity, temperature and condensation.

The most outstanding features and functions of the device are:

- Measurement of **dry air temperature**.
- Measurement of **relative air humidity** indoor.
- Calculation of **dew point temperature**.
- **Alarms** of maximum and minimum temperature and relative humidity.
- Condensation monitoring on surfaces.
- Relative humidity **LED notification**.
- **2** analogue/digital configurable **inputs**.
- **10** customisable, multi-operation **logic functions**
- **2** independent **thermostats**
- **Heartbeat** or periodical “still-alive” notification.

2 CONFIGURATION

After importing the corresponding database in ETS and adding the device into the topology of the desired project, the configuration process begins by entering the Parameters tab of the device.

2.1 GENERAL

From the “General” tab enabling additional functions available for the device is possible.

ETS PARAMETERISATION

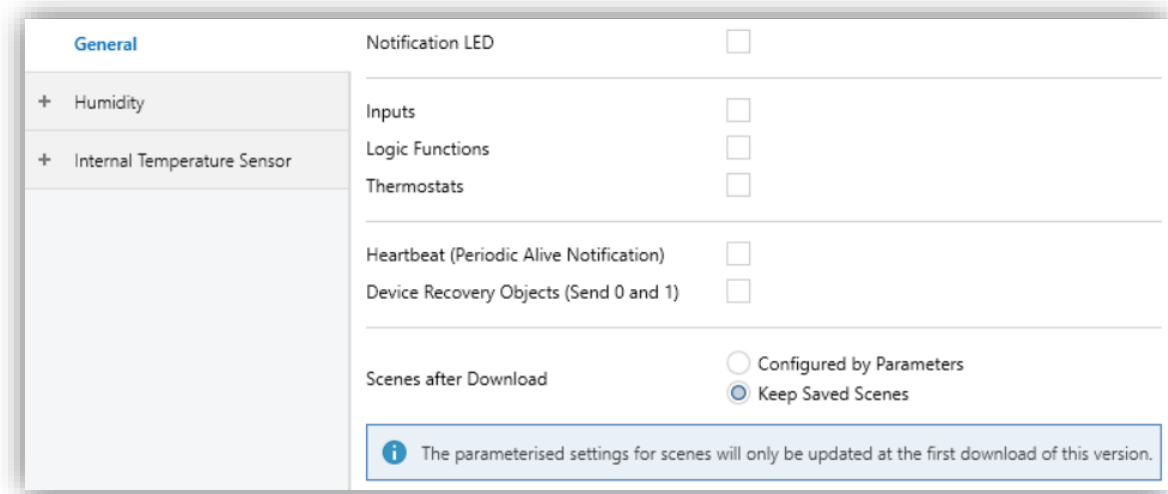
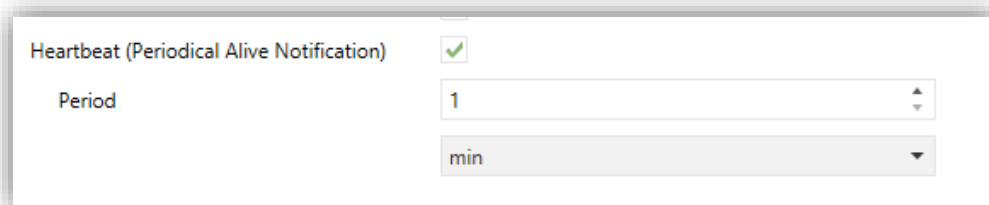


Figure 1 General settings.

- **Notification LED** [*disabled* / *enabled*]¹: enables or disables the “Notification LED” tab in the tree on the left, depending on whether this functionality is required or not. See section 2.4 for details.
- **Inputs** [*disabled* / *enabled*]: enables or disables the “Inputs” tab in the tree on the left, depending on whether the device will or will not be connected any external accessories. See section 2.5 for details.

¹ The default values of each parameter will be highlighted in blue in this document, as follows: [*default* / *rest of options*].

- **Logic Functions** [*disabled / enabled*]: enables or disables the “Logic Functions” tab in the tree on the left, depending on whether this functionality is required or not. See section 2.6 for details.
- **Thermostats** [*disabled / enabled*]: enables or disables the “Thermostats” tab on the left menu. See section 2.7 for more details.
- **Heartbeat (Periodical Alive Notification)** [*disabled / enabled*]: this parameter lets the integrator incorporate one-bit object to the project (“[Heartbeat]Object to Send ‘1’”) that will be sent periodically with value “1” to notify that the device is still working (*still alive*).



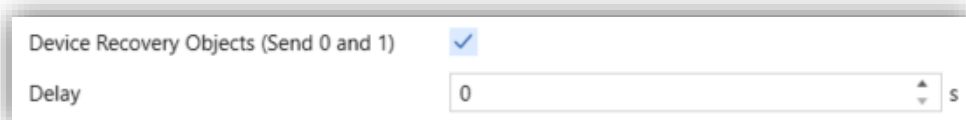
Heartbeat (Periodical Alive Notification)

Period

Figure 2. Heartbeat (Periodical Alive Notification)

Note: *The first sending after download or bus failure takes place with a delay of up to 255 seconds, to prevent bus overload. The following sendings match the period set.*

- **Device Recovery Objects (Send 0 and 1)** [*disabled / enabled*]: this parameter lets the integrator activate two new communication objects (“[Heartbeat] Device Recovery”), which will be sent to the KNX bus with values “0” and “1” respectively whenever the device begins operation (for example, after a bus power failure). It is possible to parameterise a certain **delay** [*0...255*] to this sending.



Device Recovery Objects (Send 0 and 1)

Delay s

Figure 3. Sending of indication objects on bus voltage recovery

Note: *after download or bus failure, the sending takes place with a delay of up to 6,35 seconds plus the parameterised delay, to prevent bus overload.*

- **Scene after Download** [[Configured by Parameters](#) / [Keep Saved Scenes](#)]: allows defining whether the value of the scenes is the configured by parameter or whether the previously saved value is kept after download.

Note: if “[Keep Saved Scenes](#)” option has been configured, but it is the first download of the device or a different version from the current one, the values configured by parameter will be adopted. If new scenes are added in successive downloads, it will be necessary to perform a download by checking the option “[Configured by Parameters](#)” to ensure the correct operation of these scenes.

2.2 HUMIDITY

Flat Sensato v2 is capable of measure and monitor humidity measurements, as well as send **these values to the bus** and **report high / low humidity situations**. To that end, it is necessary to configure a set of parameters.

Please refer to the “**Humidity**” user manual, available in Flat Sensato v2 product section, at the Zennio website (www.zennio.com).

2.3 INTERNAL TEMPERATURE SENSOR

Flat Sensato v2 is capable of measure and monitor temperature measurements, as well as send **these values to the bus** and **report high / low temperature situations**. To that end, it is necessary to configure a set of parameters.

ETS PARAMETERISATION

GENERAL	Temperature Sensor Calibration	0	x 0.1 °C
+ Humidity	Temperature Sending Period (0 = Disabled)	600	x 1 s
- Internal Temperature Sensor	Send with a Temperature Change (0 = Disabled)	0	x 0.1 °C
Configuration	Temperature Protection	No No ✓ Overheating Overcooling Overheating and Overcooling	

Figure 4. Temperature - Configuration

- **Temperature Sensor Calibration** [-50...0...50] [0.1 °C]: defines an offset to be applied to the measurement received from the probe to correct deviations due to external factors.
- **Temperature Sending Period** [0...600...65535] [s]: sets every how much time the value of the current temperature should be sent to the bus (through “[Internal Temp. Probe] Current Temperature”). The value “0” leaves this periodical sending disabled.
- **Send with a Temperature Change** [0...255] [0.1 °C]: defines a threshold so that whenever a new reading of the current temperature is found to differ (from the last value sent to the bus) more than such threshold, an extra sending will take place and the sending period will restart if configured. The value “0” leaves this sending with a temperature change disabled.
- **Temperature Protection**: drop-down list with the following options:
 - [No]: no temperature protection is required.
 - [Overheating]: overheating protection is required. Two extra parameters will come up:
 - **Overheating Temp.** [-30...40...125] [°C]: maximum temperature permitted. Temperature readings greater than this will be considered overheat, and therefore a “1” will be periodically sent through object “[Internal Temp. Probe] Overheating”. Once the overheat is over, a “0” will be sent (once).
 - **Hysteresis** [1...20...200] [0.1 °C]: dead *band* or threshold around the overheat temperature defined above. This dead band prevents the device from sending the overheat alarm and no-alarm over and over when the current temperature keeps fluctuating around the overheat limit (T): once the overheat alarm has been triggered, the no-alarm will not be sent until the current temperature is lower than that T minus the hysteresis. After that, if the current temperature reaches T again, the alarm will be re-sent.
 - [Overcooling]: overcooling protection is required. Two extra parameters (analogous to the above two) will come up:

- **Overcooling Temp.** `[-30...10...125]` `[°C]`: minimum temperature permitted. Temperature readings lower than this will be considered overcool, and therefore a “1” will be periodically sent through object “[Internal Temp. Probe] Overcooling”. After the overcool is over, a “0” will be sent (once).
 - **Hysteresis** `[1...20...200]` `[0.1 °C]`: dead band or threshold around the overcooling temperature. As for the overheat, once the alarm has been triggered, the no-alarm will not be sent until the current temperature is greater than T plus the hysteresis. After that, if the current temperature reaches T again, the alarm will be re-sent.
- Overheating and Overcooling: both overheating and overcooling protection are required. The following three parameters will come up:
- **Overheating Temp.**
 - **Overcooling Temp.**
 - **Hysteresis.**

The three of them are analogous to those already explained separately.

2.4 NOTIFICATION LED

2.4.1 CONFIGURATION

Flat Sensato v2 has a LED to notify, through colours, the ranges of the current humidity values. The colour to notify the humidity ranges can be two (green and yellow) or three (green, yellow and red).

It is possible to modify by parameter the humidity thresholds of the range corresponding to each colour. The following figure shows an example with the default threshold values:

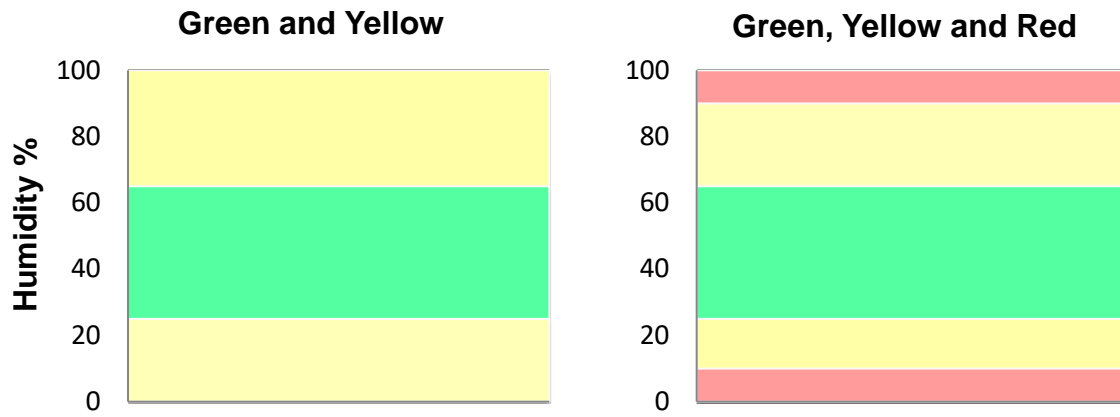


Figure 5. Default colours of Notification LED.

In addition, LED notification can be activated or deactivated via a binary object that is always available, even if the functionality is not enabled after programming. In this case, the colours and humidity thresholds to be set will be the default ones.

ETS PARAMETERISATION

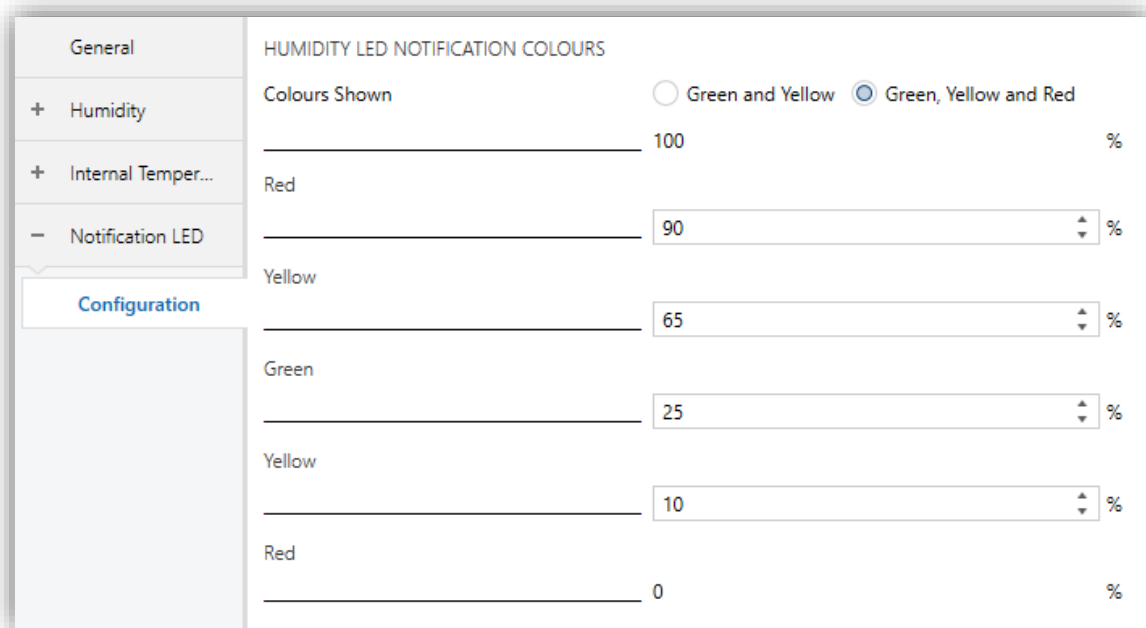


Figure 6. Notification LED – Green, Yellow and Red

After enabling **Notification LED** (see section 2.1), a new tab will be incorporated into the tree on the left.

The parameters available in this tab are:

- **Colours Shown** [*Green and Yellow* / *Green, Yellow and Red*]: allows selecting whether the notification LED comprises two or three colours.

- **Red / Yellow / Green:** humidity value (0-100%) from which the notification LED will display the indicated colour. The limit values (0% and 100%) are not editable. Default values are shown in the following figures.

Note: *The threshold values should be set from highest to lowest (from top to bottom). If this indication is not met, default values will be taken. In addition, an alert message will be shown: ⚠ Incorrect yellow threshold values. The default values will be downloaded in case of an incorrect parameterisation.*

The notification LED can be enabled or disabled at any time by means of the binary object "[LED] Notification LED". Thus:

- If the functionality starts enabled after programming, the LED will maintain the configuration set by parameter against enable/disable actions performed via the object.
- If it is started disabled, the object will allow its activation, using the default colours and thresholds for notification.

2.5 INPUTS

Flat Sensato v2 incorporates **two analogue/digital inputs**, each configurable as a:

- **Binary Input**, for the connection of a pushbutton or a switch/sensor.
- **Temperature Probe**, for the connection of a temperature sensor from Zennio.
- **Motion Detector**, for the connection of a motion detector from Zennio.

2.5.1 BINARY INPUTS

Please refer to the "**Binary Inputs**" user manual, available in Flat Sensato v2 product section, at the Zennio website (www.zennio.com).

2.5.2 TEMPERATURE PROBE

Please refer to the "**Temperature Probe**" user manual, available in Flat Sensato v2 product section, at the Zennio website (www.zennio.com).

2.5.3 MOTION DETECTOR

It is possible to connect motion detectors from Zennio to the input ports of Flat Sensato v2.

Please refer to the “**Motion Detector**” user manual, available in Flat Sensato v2 product section, at the Zennio website (www.zennio.com).

2.6 LOGIC FUNCTIONS

This module makes it possible to perform numeric and binary operations with incoming values received from the KNX bus, and to send the results through other communication objects specifically enabled for this purpose.

Flat Sensato v2 can implement **up to 10 different and independent functions**, each of them entirely customisable and consisting in **up to 4 consecutive operations each**.

The execution of each function can depend on a configurable **condition**, which will be evaluated every time the function is **triggered** through specific, parameterisable communication objects. The result after executing the operations of the function can also be evaluated according to certain **conditions** and afterwards sent (or not) to the KNX bus, which can be done every time the function is executed, periodically or only when the result differs from the last one.

Please refer to the “**Logic Functions**” user manual (available in Flat Sensato v2 product section at the Zennio homepage, www.zennio.com) for detailed information about the functionality and the configuration of the related parameters.

2.7 THERMOSTATS

Flat Sensato v2 implements **two** thermostats, which can be enabled and configured independently.

Please, refer to the specific “**Thermostat**” user manual available under Flat Sensato v2 product section at the Zennio homepage (www.zennio.com) for detailed information about the functionality and the configuration of the related parameters.

ANNEX I. COMMUNICATION OBJECTS

- “Functional range” shows the values that, with independence of any other values permitted by the bus according to the object size, may be of any use or have a particular meaning because of the specifications or restrictions from both the KNX standard or the application program itself.

Number	Size	I/O	Flags	Data type (DPT)	Functional Range	Name	Function
1	1 Bit	O	CR-T-	DPT_Trigger	0/1	[Heartbeat] Object to Send '1'	Sending of '1' Periodically
2	1 Bit	O	CR-T-	DPT_Trigger	0/1	[Heartbeat] Device Recovery	Send 0
3	1 Bit	O	CR-T-	DPT_Trigger	0/1	[Heartbeat] Device Recovery	Send 1
4	1 Byte	I	C-W--	DPT_Percent_V8		[Hum] Sensor Calibration	-12% ... 12%
5	2 Bytes	O	CR-T-	DPT_Value_Humidity	-12% - 12%	[Hum] Current Humidity	Humidity Sensor Value
6	2 Bytes	O	CR-T-	DPT_Value_Temp	-273.00° - 670433.28°	[Hum] Dew Point Temperature	Dew Point Temperature Value
7	2 Bytes	I	C-W--	DPT_Value_Humidity	-12% - 12%	[Hum] High Humidity Alarm Threshold	Value of High Humidity Alarm Threshold
8	2 Bytes	I	C-W--	DPT_Value_Humidity	-12% - 12%	[Hum] Low Humidity Alarm Threshold	Value of Low Humidity Alarm Threshold
9	2 Bytes	I	C-W--	DPT_Value_Temp	-273.00° - 670433.28°	[Hum] Surface Temperature	Input Surface Temperature Value
10	1 Bit	O	CR-T-	DPT_Alarm	0/1	[Hum] High Humidity	0 = No Alarm; 1 = Alarm
11	1 Bit	O	CR-T-	DPT_Alarm	0/1	[Hum] Low Humidity	0 = No Alarm; 1 = Alarm
12	1 Bit	O	CR-T-	DPT_Alarm	0/1	[Hum] Condensation	0 = No Alarm; 1 = Alarm
13	1 Bit	I	C-W--	DPT_Enable	0/1	[Led] Notification Led	0 = Disable; 1 = Enable
14	2 Bytes	O	CR-T-	DPT_Value_Temp	-273.00° - 670433.28°	[Internal Temp. Probe] Current Temperature	Temperature Sensor Value
15	1 Bit	O	CR-T-	DPT_Alarm	0/1	[Internal Temp. Probe] Overcooling	0 = No Alarm; 1 = Alarm
16	1 Bit	O	CR-T-	DPT_Alarm	0/1	[Internal Temp. Probe] Overheating	0 = No Alarm; 1 = Alarm
17	1 Byte	I	C-W--	DPT_SceneNumber	0 - 63	[Motion Detector] Scene Input	Scene Value
18	1 Byte	O	C--T-	DPT_SceneControl	0-63; 128-191	[Motion Detector] Scene Output	Scene Value
19, 53	1 Byte	O	CR-T-	DPT_Scaling	0% - 100%	[Ix] Luminosity	0-100%
20, 54	1 Bit	O	CR-T-	DPT_Alarm	0/1	[Ix] Open Circuit Error	0 = No Error; 1 = Open Circuit Error
21, 55	1 Bit	O	CR-T-	DPT_Alarm	0/1	[Ix] Short Circuit Error	0 = No Error; 1 = Short Circuit Error
22, 56	1 Byte	O	CR-T-	DPT_Scaling	0% - 100%	[Ix] Presence State (Scaling)	0-100%
23, 57	1 Byte	O	CR-T-	DPT_HVACMode	1=Comfort 2=Standby 3=Economy 4=Building Protection	[Ix] Presence State (HVAC)	Auto, Comfort, Standby, Economy, Building Protection
24, 58	1 Bit	O	CR-T-	DPT_Switch	0/1	[Ix] Presence State (Binary)	Binary Value
	1 Bit	O	CR-T-	DPT_Start	0/1	[Ix] Presence: Slave Output	1 = Motion Detected

25, 59	1 Bit	I	C - W - -	DPT_Window_Door	0/1	[Ix] Presence Trigger	Binary Value to Trigger the Presence Detection
26, 60	1 Bit	I	C - W - -	DPT_Start	0/1	[Ix] Presence: Slave Input	0 = Nothing; 1 = Detection from slave device
27, 61	2 Bytes	I/O	C R W - -	DPT_TimePeriodSec	0 - 65535	[Ix] Presence: Waiting Time	0-65535 s.
28, 62	2 Bytes	I/O	C R W - -	DPT_TimePeriodSec	0 - 65535	[Ix] Presence: Listening Time	1-65535 s.
29, 63	2 Bytes	I/O	C R W - -	DPT_TimePeriodMin	0 - 65535	[Ix] Presence: Safety Time	0-1440 min.
30, 64	1 Byte	I/O	C R W - -	DPT_Value_1_Ucount	0 - 255	[Ix] Presence: Filter Detections Number	2-5
31, 65	1 Byte	I/O	C R W - -	DPT_Value_1_Ucount	0 - 255	[Ix] Presence: Filter Detection Window	15-60 s.
32, 66	1 Bit	I	C - W - -	DPT_Enable	0/1	[Ix] Presence: Enable	According to parameters
33, 67	1 Bit	I/O	C R W - -	DPT_DayNight	0/1	[Ix] Presence: Day/Night	According to parameters
34, 68	1 Bit	O	C R - T -	DPT_Occupancy	0/1	[Ix] Presence: Occupancy State (Master Output)	0 = Not Occupied; 1 = Occupied
	1 Bit	I	C - W - -	DPT_Occupancy	0/1	[Ix] Presence: Occupancy State (Master Input)	0 = Not Occupied; 1 = Occupied
35, 69	1 Bit	I	C - W - -	DPT_Switch	0/1	[Ix] Presence: Access Guest/Employee	0 = Guest; 1 = Employee
	1 Bit	I	C - W - -	DPT_Switch	0/1	[Ix] Presence: Access Guest/Employee	0 = Employee; 1 = Guest
36, 70	1 Bit	I	C - W - -	DPT_Bool	0/1	[Ix] Presence: Sold/Unsold Room	0 = Unsold; 1 = Sold
	1 Bit	I	C - W - -	DPT_Bool	0/1	[Ix] Presence: Sold/Unsold Room	0 = Sold; 1 = Unsold
37, 71	1 Bit	I	C - W - -	DPT_Start	0/1	[Ix] External Motion Detection	0 = Nothing; 1 = Motion detected by an external sensor
38, 43, 48, 72, 77, 82	1 Byte	O	C R - T -	DPT_Scaling	0% - 100%	[Ix] [Cx] Detection State (Scaling)	0-100%
39, 44, 49, 73, 78, 83	1 Byte	O	C R - T -	DPT_HVACMode	1=Comfort 2=Standby 3=Economy 4=Building Protection	[Ix] [Cx] Detection State (HVAC)	Auto, Comfort, Standby, Economy, Building Protection
40, 45, 50, 74, 79, 84	1 Bit	O	C R - T -	DPT_Switch	0/1	[Ix] [Cx] Detection State (Binary)	Binary Value
41, 46, 51, 75, 80, 85	1 Bit	I	C - W - -	DPT_Enable	0/1	[Ix] [Cx] Enable Channel	According to parameters
42, 47, 52, 76, 81, 86	1 Bit	I	C - W - -	DPT_Switch	0/1	[Ix] [Cx] Force State	0 = No Detection; 1 = Detection
87, 93	1 Bit	I	C - W - -	DPT_Enable	0/1	[Ix] Input Lock	0 = Unlock; 1 = Lock
88, 94	1 Bit	O	C - - - T -	DPT_Switch	0/1	[Ix] [Short Press] 0	Sending of 0
	1 Bit	O	C - - - T -	DPT_Switch	0/1	[Ix] [Short Press] 1	Sending of 1
	1 Bit	I	C - W T -	DPT_Switch	0/1	[Ix] [Short Press] 0/1 Switching	Switching 0/1
	1 Bit	O	C - - - T -	DPT_UpDown	0/1	[Ix] [Short Press] Move Up Shutter	Sending of 0 (Up)
	1 Bit	O	C - - - T -	DPT_UpDown	0/1	[Ix] [Short Press] Move Down Shutter	Sending of 1 (Down)
	1 Bit	O	C - - - T -	DPT_UpDown	0/1	[Ix] [Short Press] Move Up/Down Shutter	Switching 0/1 (Up/Down)
	1 Bit	O	C - - - T -	DPT_Step	0/1	[Ix] [Short Press] Stop/Step Up Shutter	Sending of 0 (Stop/Step Up)
1 Bit	O	C - - - T -	DPT_Step	0/1	[Ix] [Short Press] Stop/Step Down Shutter	Sending of 1 (Stop/Step Down)	

	1 Bit	O	C--T-	DPT_Step	0/1	[Ix] [Short Press] Stop/Step Shutter (Switched)	Switching of 0/1 (Stop/Step Up/Down)
	4 Bit	O	C--T-	DPT_Control_Dimming	0x0/0x8 (Stop) 0x1...0x7 (Dec.) 0x9...0xF (Inc.)	[Ix] [Short Press] Brighter	Increase Brightness
	4 Bit	O	C--T-	DPT_Control_Dimming	0x0/0x8 (Stop) 0x1...0x7 (Dec.) 0x9...0xF (Inc.)	[Ix] [Short Press] Darker	Decrease Brightness
	4 Bit	O	C--T-	DPT_Control_Dimming	0x0/0x8 (Stop) 0x1...0x7 (Dec.) 0x9...0xF (Inc.)	[Ix] [Short Press] Brighter/Darker	Switch Bright/Dark
	1 Bit	O	C--T-	DPT_Switch	0/1	[Ix] [Short Press] Light On	Sending of 1 (On)
	1 Bit	O	C--T-	DPT_Switch	0/1	[Ix] [Short Press] Light Off	Sending of 0 (Off)
	1 Bit	I	C-WT-	DPT_Switch	0/1	[Ix] [Short Press] Light On/Off	Switching 0/1
	1 Byte	O	C--T-	DPT_SceneControl	0-63; 128-191	[Ix] [Short Press] Run Scene	Sending of 0 - 63
	1 Byte	O	C--T-	DPT_SceneControl	0-63; 128-191	[Ix] [Short Press] Save Scene	Sending of 128 - 191
	1 Bit	I/O	CRWT-	DPT_Switch	0/1	[Ix] [Switch/Sensor] Edge	Sending of 0 or 1
	1 Byte	O	C--T-	DPT_Value_1_Ucount	0 - 255	[Ix] [Short Press] Constant Value (Integer)	0 - 255
	1 Byte	O	C--T-	DPT_Scaling	0% - 100%	[Ix] [Short Press] Constant Value (Percentage)	0% - 100%
	2 Bytes	O	C--T-	DPT_Value_2_Ucount	0 - 65535	[Ix] [Short Press] Constant Value (Integer)	0 - 65535
2 Bytes	O	C--T-	9.xxx	-671088.64 - 670433.28	[Ix] [Short Press] Constant Value (Float)	Float Value	
89, 95	1 Byte	I	C-W--	DPT_Scaling	0% - 100%	[Ix] [Short Press] Shutter Status (Input)	0% = Top; 100% = Bottom
	1 Byte	I	C-W--	DPT_Scaling	0% - 100%	[Ix] [Short Press] Dimming Status (Input)	0% - 100%
90, 96	1 Bit	O	C--T-	DPT_Switch	0/1	[Ix] [Long Press] 0	Sending of 0
	1 Bit	O	C--T-	DPT_Switch	0/1	[Ix] [Long Press] 1	Sending of 1
	1 Bit	I	C-WT-	DPT_Switch	0/1	[Ix] [Long Press] 0/1 Switching	Switching 0/1
	1 Bit	O	C--T-	DPT_UpDown	0/1	[Ix] [Long Press] Move Up Shutter	Sending of 0 (Up)
	1 Bit	O	C--T-	DPT_UpDown	0/1	[Ix] [Long Press] Move Down Shutter	Sending of 1 (Down)
	1 Bit	O	C--T-	DPT_UpDown	0/1	[Ix] [Long Press] Move Up/Down Shutter	Switching 0/1 (Up/Down)
	1 Bit	O	C--T-	DPT_Step	0/1	[Ix] [Long Press] Stop/Step Up Shutter	Sending of 0 (Stop/Step Up)
	1 Bit	O	C--T-	DPT_Step	0/1	[Ix] [Long Press] Stop/Step Down Shutter	Sending of 1 (Stop/Step Down)
	1 Bit	O	C--T-	DPT_Step	0/1	[Ix] [Long Press] Stop/Step Shutter (Switched)	Switching of 0/1 (Stop/Step Up/Down)

	4 Bit	O	C--T-	DPT_Control_Dimming	0x0/0x8 (Stop) 0x1...0x7 (Dec.) 0x9...0xF (Inc.)	[Ix] [Long Press] Brighter	Long Pr. -> Brighter; Release -> Stop
	4 Bit	O	C--T-	DPT_Control_Dimming	0x0/0x8 (Stop) 0x1...0x7 (Dec.) 0x9...0xF (Inc.)	[Ix] [Long Press] Darker	Long Pr. -> Darker; Release -> Stop
	4 Bit	O	C--T-	DPT_Control_Dimming	0x0/0x8 (Stop) 0x1...0x7 (Dec.) 0x9...0xF (Inc.)	[Ix] [Long Press] Brighter/Darker	Long Pr. -> Brighter/Darker; Release -> Stop
	1 Bit	O	C--T-	DPT_Switch	0/1	[Ix] [Long Press] Light On	Sending of 1 (On)
	1 Bit	O	C--T-	DPT_Switch	0/1	[Ix] [Long Press] Light Off	Sending of 0 (Off)
	1 Bit	I	C-WT-	DPT_Switch	0/1	[Ix] [Long Press] Light On/Off	Switching 0/1
	1 Byte	O	C--T-	DPT_SceneControl	0-63; 128-191	[Ix] [Long Press] Run Scene	Sending of 0 - 63
	1 Byte	O	C--T-	DPT_SceneControl	0-63; 128-191	[Ix] [Long Press] Save Scene	Sending of 128 - 191
	1 Bit	O	CR-T-	DPT_Alarm	0/1	[Ix] [Switch/Sensor] Alarm: Breakdown or Sabotage	1 = Alarm; 0 = No Alarm
	2 Bytes	O	C--T-	9.xxx	-671088.64 - 670433.28	[Ix] [Long Press] Constant Value (Float)	Float Value
	2 Bytes	O	C--T-	DPT_Value_2_Ucount	0 - 65535	[Ix] [Long Press] Constant Value (Integer)	0 - 65535
	1 Byte	O	C--T-	DPT_Scaling	0% - 100%	[Ix] [Long Press] Constant Value (Percentage)	0% - 100%
	1 Byte	O	C--T-	DPT_Value_1_Ucount	0 - 255	[Ix] [Long Press] Constant Value (Integer)	0 - 255
91, 97	1 Bit	O	C--T-	DPT_Trigger	0/1	[Ix] [Long Press/Release] Stop Shutter	Release -> Stop Shutter
92, 98	1 Byte	I	C-W--	DPT_Scaling	0% - 100%	[Ix] [Long Press] Dimming Status (Input)	0% - 100%
	1 Byte	I	C-W--	DPT_Scaling	0% - 100%	[Ix] [Long Press] Shutter Status (Input)	0% = Top; 100% = Bottom
99, 103	2 Bytes	O	CR-T-	DPT_Value_Temp	-273.00° - 670433.28°	[Ix] Current Temperature	Temperature Sensor Value
100, 104	1 Bit	O	CR-T-	DPT_Alarm	0/1	[Ix] Overcooling	0 = No Alarm; 1 = Alarm
101, 105	1 Bit	O	CR-T-	DPT_Alarm	0/1	[Ix] Overheating	0 = No Alarm; 1 = Alarm
102, 106	1 Bit	O	CR-T-	DPT_Alarm	0/1	[Ix] Probe Error	0 = No Alarm; 1 = Alarm
107, 108, 109, 110, 111, 112, 113, 114, 115, 116, 117, 118, 119, 120, 121, 122, 123, 124, 125, 126, 127, 128, 129, 130, 131, 132, 133, 134, 135, 136, 137, 138	1 Bit	I	C-W--	DPT_Bool	0/1	[LF] (1-Bit) Data Entry x	Binary Data Entry (0/1)
139, 140, 141, 142, 143, 144, 145, 146, 147, 148, 149, 150, 151, 152, 153, 154	1 Byte	I	C-W--	DPT_Value_1_Ucount	0 - 255	[LF] (1-Byte) Data Entry x	1-Byte Data Entry (0-255)

155, 156, 157, 158, 159, 160, 161, 162, 163, 164, 165, 166, 167, 168, 169, 170	2 Bytes	I	C - W - -	DPT_Value_2_Ucount	0 - 65535	[LF] (2-Byte) Data Entry x	2-Byte Data Entry
	2 Bytes	I	C - W - -	DPT_Value_2_Count	-32768 - 32767	[LF] (2-Byte) Data Entry x	2-Byte Data Entry
	2 Bytes	I	C - W - -	9.xxx	-671088.64 - 670433.28	[LF] (2-Byte) Data Entry x	2-Byte Data Entry
171, 172, 173, 174, 175, 176, 177, 178	4 Bytes	I	C - W - -	DPT_Value_4_Count	-2147483648 - 2147483647	[LF] (4-Byte) Data Entry x	4-Byte Data Entry
179, 180, 181, 182, 183, 184, 185, 186, 187, 188	1 Bit	O	CR - T -	DPT_Bool	0/1	[LF] Function x - Result	(1-Bit) Boolean
	1 Byte	O	CR - T -	DPT_Value_1_Ucount	0 - 255	[LF] Function x - Result	(1-Byte) Unsigned
	2 Bytes	O	CR - T -	DPT_Value_2_Ucount	0 - 65535	[LF] Function x - Result	(2-Byte) Unsigned
	4 Bytes	O	CR - T -	DPT_Value_4_Count	-2147483648 - 2147483647	[LF] Function x - Result	(4-Byte) Signed
	1 Byte	O	CR - T -	DPT_Scaling	0% - 100%	[LF] Function x - Result	(1-Byte) Percentage
	2 Bytes	O	CR - T -	DPT_Value_2_Count	-32768 - 32767	[LF] Function x - Result	(2-Byte) Signed
	2 Bytes	O	CR - T -	9.xxx	-671088.64 - 670433.28	[LF] Function x - Result	(2-Byte) Float
189	1 Byte	I	C - W - -	DPT_SceneControl	0-63; 128-191	[Thermostat] Scenes	0 - 63 (Execute 1 - 64); 128 - 191 (Save 1 - 64)
190, 228	2 Bytes	I	C - W T U	DPT_Value_Temp	-273.00° - 670433.28°	[Tx] Temperature Source 1	External Sensor Temperature
191, 229	2 Bytes	I	C - W T U	DPT_Value_Temp	-273.00° - 670433.28°	[Tx] Temperature Source 2	External Sensor Temperature
192, 230	2 Bytes	O	CR - T -	DPT_Value_Temp	-273.00° - 670433.28°	[Tx] Effective Temperature	Effective Control Temperature
193, 231	1 Byte	I	C - W - -	DPT_HVACMode	1=Comfort 2=Standby 3=Economy 4=Building Protection	[Tx] Special Mode	1-Byte HVAC Mode
194, 232	1 Bit	I	C - W - -	DPT_Ack	0/1	[Tx] Special Mode: Comfort	0 = Nothing; 1 = Trigger
	1 Bit	I	C - W - -	DPT_Switch	0/1	[Tx] Special Mode: Comfort	0 = Off; 1 = On
195, 233	1 Bit	I	C - W - -	DPT_Ack	0/1	[Tx] Special Mode: Standby	0 = Nothing; 1 = Trigger
	1 Bit	I	C - W - -	DPT_Switch	0/1	[Tx] Special Mode: Standby	0 = Off; 1 = On
196, 234	1 Bit	I	C - W - -	DPT_Ack	0/1	[Tx] Special Mode: Economy	0 = Nothing; 1 = Trigger
	1 Bit	I	C - W - -	DPT_Switch	0/1	[Tx] Special Mode: Economy	0 = Off; 1 = On
197, 235	1 Bit	I	C - W - -	DPT_Ack	0/1	[Tx] Special Mode: Protection	0 = Nothing; 1 = Trigger
	1 Bit	I	C - W - -	DPT_Switch	0/1	[Tx] Special Mode: Protection	0 = Off; 1 = On
198, 236	1 Bit	I	C - W - -	DPT_Window_Door	0/1	[Tx] Window Status (Input)	0 = Closed; 1 = Open
199, 237	1 Bit	I	C - W - -	DPT_Trigger	0/1	[Tx] Comfort Prolongation	0 = Nothing; 1 = Timed Comfort
200, 238	1 Byte	O	CR - T -	DPT_HVACMode	1=Comfort 2=Standby 3=Economy 4=Building Protection	[Tx] Special Mode Status	1-Byte HVAC Mode
201, 239	2 Bytes	I	C - W - -	DPT_Value_Temp	-273.00° - 670433.28°	[Tx] Setpoint	Thermostat Setpoint Input
	2 Bytes	I	C - W - -	DPT_Value_Temp	-273.00° - 670433.28°	[Tx] Basic Setpoint	Reference Setpoint
202, 240	1 Bit	I	C - W - -	DPT_Step	0/1	[Tx] Setpoint Step	0 = Decrease Setpoint; 1 = Increase Setpoint

203, 241	2 Bytes	I	C - W - -	DPT_Value_Tempd	-671088.64° - 670433.28°	[Tx] Setpoint Offset	Float Offset Value
204, 242	2 Bytes	O	CR - T -	DPT_Value_Temp	-273.00° - 670433.28°	[Tx] Setpoint Status	Current Setpoint
205, 243	2 Bytes	O	CR - T -	DPT_Value_Temp	-273.00° - 670433.28°	[Tx] Basic Setpoint Status	Current Basic Setpoint
206, 244	2 Bytes	O	CR - T -	DPT_Value_Tempd	-671088.64° - 670433.28°	[Tx] Setpoint Offset Status	Current Setpoint Offset
207, 245	1 Bit	I	C - W - -	DPT_Reset	0/1	[Tx] Setpoint Reset	Reset Setpoint to Default
	1 Bit	I	C - W - -	DPT_Reset	0/1	[Tx] Offset Reset	Reset Offset
208, 246	1 Bit	I	C - W - -	DPT_Heat_Cool	0/1	[Tx] Mode	0 = Cool; 1 = Heat
209, 247	1 Bit	O	CR - T -	DPT_Heat_Cool	0/1	[Tx] Mode Status	0 = Cool; 1 = Heat
210, 248	1 Bit	I	C - W - -	DPT_Switch	0/1	[Tx] On/Off	0 = Off; 1 = On
211, 249	1 Bit	O	CR - T -	DPT_Switch	0/1	[Tx] On/Off Status	0 = Off; 1 = On
212, 250	1 Bit	I/O	CRW - -	DPT_Switch	0/1	[Tx] Main System (Cool)	0 = System 1; 1 = System 2
213, 251	1 Bit	I/O	CRW - -	DPT_Switch	0/1	[Tx] Main System (Heat)	0 = System 1; 1 = System 2
214, 252	1 Bit	I	C - W - -	DPT_Enable	0/1	[Tx] Enable/Disable Secondary System (Cool)	0 = Disable; 1 = Enable
215, 253	1 Bit	I	C - W - -	DPT_Enable	0/1	[Tx] Enable/Disable Secondary System (Heat)	0 = Disable; 1 = Enable
216, 222, 254, 260	1 Byte	O	CR - T -	DPT_Scaling	0% - 100%	[Tx] [Sx] Control Variable (Cool)	PI Control (Continuous)
217, 223, 255, 261	1 Byte	O	CR - T -	DPT_Scaling	0% - 100%	[Tx] [Sx] Control Variable (Heat)	PI Control (Continuous)
	1 Byte	O	CR - T -	DPT_Scaling	0% - 100%	[Tx] [Sx] Control Variable	PI Control (Continuous)
218, 224, 256, 262	1 Bit	O	CR - T -	DPT_Switch	0/1	[Tx] [Sx] Control Variable (Cool)	2-Point Control
	1 Bit	O	CR - T -	DPT_Switch	0/1	[Tx] [Sx] Control Variable (Cool)	PI Control (PWM)
219, 225, 257, 263	1 Bit	O	CR - T -	DPT_Switch	0/1	[Tx] [Sx] Control Variable (Heat)	2-Point Control
	1 Bit	O	CR - T -	DPT_Switch	0/1	[Tx] [Sx] Control Variable (Heat)	PI Control (PWM)
	1 Bit	O	CR - T -	DPT_Switch	0/1	[Tx] [Sx] Control Variable	2-Point Control
	1 Bit	O	CR - T -	DPT_Switch	0/1	[Tx] [Sx] Control Variable	PI Control (PWM)
220, 226, 258, 264	1 Bit	O	CR - T -	DPT_Switch	0/1	[Tx] [Sx] PI State (Cool)	0 = PI Signal 0%; 1 = PI Signal Greater than 0%
221, 227, 259, 265	1 Bit	O	CR - T -	DPT_Switch	0/1	[Tx] [Sx] PI State (Heat)	0 = PI Signal 0%; 1 = PI Signal Greater than 0%
	1 Bit	O	CR - T -	DPT_Switch	0/1	[Tx] [Sx] PI State	0 = PI Signal 0%; 1 = PI Signal Greater than 0%



Join and send us your inquiries
about Zennio devices:

<https://support.zennio.com>

Zennio Avance y Tecnología S.L.
C/ Río Jarama, 132. Nave P-8.11
45007 Toledo, Spain.

Tel. +34 925 232 002.

www.zennio.com
info@zennio.com